

Eversion of the Drone Endophallus for Semen Collection

Dale McMahan & Krispn Given kgiven@purdue.edu

1: Prepare the Drone

Select a mature drone ready for semen extraction.

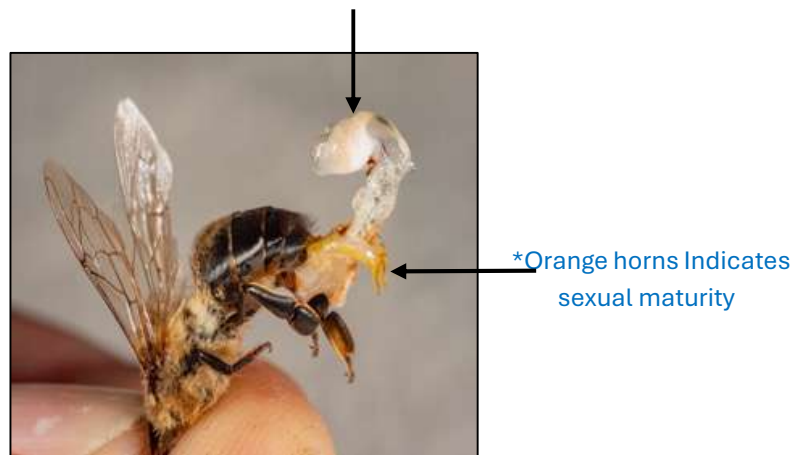
Gently hold the drone by its head and thorax.

Ensure the drone is warm and well fed, which facilitates eversion.

2: Induce Eversion

Gently apply pressure to the abdomen using your thumb and index finger. Use a rhythmic motion to stimulate the partial eversion response. Once partially everted the abdomen should feel hard at this stage.

To induce a full eversion of the endophallus use a thumb index finger rolling pinch to achieve the “forced” full eversion exposing the semen and mucus layers. **Note:** sometimes the drone will completely evert on its own with an audible snap due to extreme hydrostatic pressure and self contaminate. The drone pictured below shows the classic full eversion of the drone with a coffee-colored semen floating on the ivory-colored mucus.



3: Assess Maturity and Semen Presence Visually inspect the everted endophallus:

- **Mature drones** will present visible semen.
- **Immature drones pictured below** may show incomplete eversion or lack semen.

